

# PANTHER PAW PRESS

JANUARY 10, 2013



## Wondering how to spend that Tax Refund ?

### Why not consider one of the following:

- \$ Pay off any remaining **2012-2013 Tuition** balance.
- \$ Pre-Pay for **NEXT year's** tuition and fees.
- \$ Deposit enough money into **student lunch** account to cover the rest of the school year.
- \$ Consider helping an anonymous **family in need** of tuition assistance.

SAINT BERNARD CATHOLIC SCHOOL



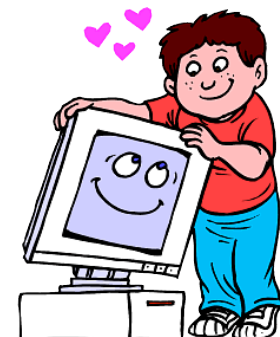
1/14	Geography Bee (Gr. 4-8)
1/15	HAPPY BIRTHDAY MR. KRUSE! Denim Day for \$1
1/17	100 <sup>th</sup> Day of School!
1/21	NO SCHOOL – Martin Luther King Day
1/30	Art Fair (Gr. K-8)
2/9	PTO County & Western Dance

## Saint Bernard



### Preschool & Daycare

Both of our Preschool and Daycare Classrooms are in desperate need of newer-model computers for their students to use. Please contact director, **Christy Yeager**, at **649-4417** if you would be willing to donate a "gently used" computer. Thanks!



# HAPPY Birthday



Pictured along with our school January birthdays is one of our favorite "church-mates", Mrs. Mary Smith, who's also a January baby!



*Saint Bernard*  
  
**Catholic School**  
 Faith in Every Child

547 Elm Street  
 Rockport, IN 47635

Telephone:  
 812.649.2501

Fax:  
 812.649.4176

E-mail:  
[stbernardschool@evdio.org](mailto:stbernardschool@evdio.org)

[www.stbernardschool.info](http://www.stbernardschool.info)



## Caught a ball game yet? It's not too late!



(Home games in bold)

**LP Girls**  
 (3<sup>rd</sup> & 4<sup>th</sup>)  
 • Jan. 14

**LP Boys**  
 (3<sup>rd</sup> & 4<sup>th</sup>)  
 • Jan. 21

**JV Girls**  
 (5<sup>th</sup> & 6<sup>th</sup>)  
 • Jan. 14  
 • Jan. 24  
 • Jan. 29

• Feb. 2

**JV Boys**  
 (5<sup>th</sup> & 6<sup>th</sup>)  
 • Jan. 14  
 • Jan. 22  
 • Jan. 24  
 • Jan. 29  
 • Feb. 2

**V Girls**  
 (7<sup>th</sup> & 8<sup>th</sup>)  
 • Jan. 10  
 • Jan. 14  
 • Jan. 17  
 • Jan. 24  
 • Jan. 29  
 • Jan. 31

**V Boys**  
 (7<sup>th</sup> & 8<sup>th</sup>)  
 • Jan. 10  
 • Jan. 14  
 • Jan. 17  
 • Jan. 22  
 • Jan. 24  
 • Jan. 29



Our school Geography Bee is  
Monday, Jan. 14 at 8:30am.

The following students will  
 be completing:

- |                  |                  |
|------------------|------------------|
| • Holland Emmick | • Emma Stallings |
| • Olivia Turner  | • Mason Havener  |
| • Hannah Palmer  | • Matthew Keller |
| • Will Stewart   | • Maria Rust     |
| • Skylar Niles   | • Nick Stoermer  |

## Catholic Schools Week 2013

Jan. 28 –Feb. 2

